

Altezza totale Arcata / Total Car Frame Height 2714

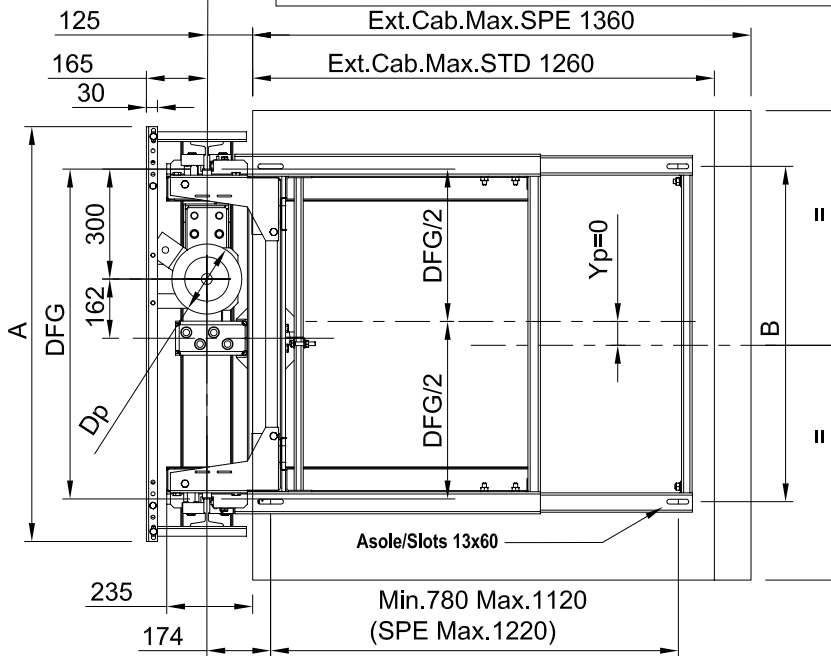
2554

Altezza Cabina Min. / External Cabin Min. 2250

Altezza Cabina Max. / External Cabin Max. 2420

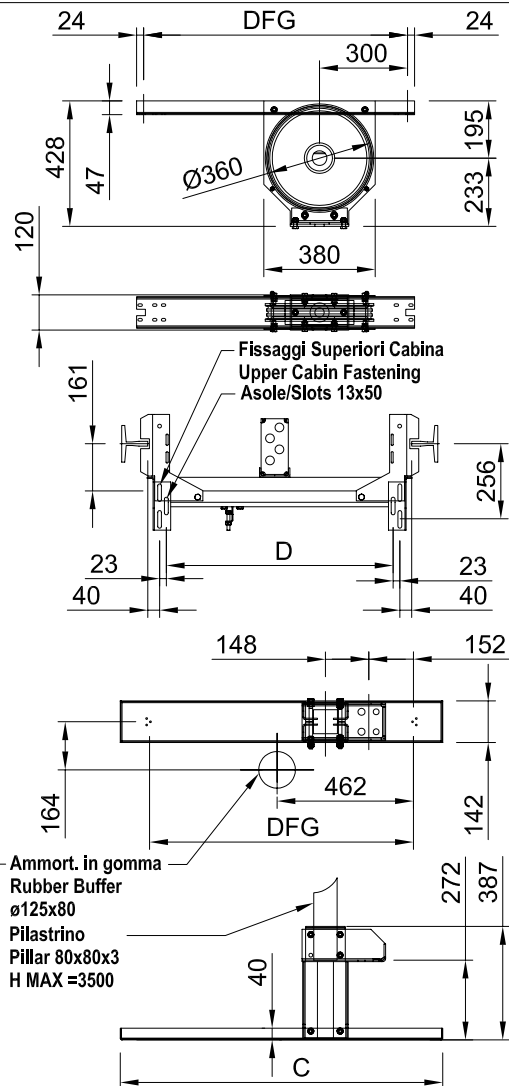
Ext. Cab. Max. SPE 1360

Ext. Cab. Max. STD 1260



DFG	A	B	C	D
800	1032	815	1000	674
900	1132	915	1100	774

(\*) Con blocchi Presa progressiva utilizzare solo guide trafilate oliate e lavorate oliate  
Use only cold-drawn oiled and machined oiled Guide Rails in case of Progressive safety gear



CARATTERISTICHE TECNICHE TECHNICAL DATA

CARICHI LOADS	Peso Cabina Max. / Car Weight (Pc)	474 Kg
	Massa Arcata / Car Frame Weight (Pa)	146 Kg
	Portata Nominale / Useful load (Q)	630 Kg
	Tiro Funi Max./Max Draught Ropes (Pa+Pc+Q)	1250 Kg
	Pc + Q Max	1104 Kg
	Massa Arcatina / Pulley Assembly Weight	34 Kg
Velocità Max. (con Blocchi a presa Istantanea) Max Speed (with instantaneous Safety Gear)		0,63 m/s
Velocità Max. (con Blocchi a presa Progressiva) Max Speed (with progressive Safety Gear)		(*) 1 m/s
Tipo Guide STD Guide Type STD	T125/82/16 - T125/68/9 - T90/75/16 T89/62/16 - T82/68/9	
ALTRI TIPI A RICHIESTA / OTHER TYPES ON REQUEST		
Numero funi e diametro Number of Ropes and diameter		N°4 - ø9
Diametro Puleggia / Pulley Diameter		ø 360
Pattino tipo / Guide shoe type		a striscio
Ruote a richiesta / Bearings Rollers optional		ø 80
Diametro Max. Pistone "Dp" / Max Ram Diameter "Dp"		ø 195
Fossa Tecnica Min con disp. di sicurezza (fondo sp.80mm) Min Technical Pit with safety pillar device (car floor th. 80mm)		500 mm
Fossa a normativa a EN 81.2 (fondo sp.80mm) Pit EN 81.2 (car floor th.80mm)		1100 mm

ARCATA TIPO - CAR FRAME TYPE

6305 2:1

PAGINA	PAGE	1
DATA	DATE	06/06/08
Nr. DOC.	DOC. Nr.	T6AUN003
EDIZIONE	EDITION	11.0

TECHNO LIFT s.r.l.

LAVIS - TRENTO

La TECHNO LIFT si riserva di apportare senza preavviso qualsiasi tipo di modifica. Techno Lift reserves the right to introduce any kind of changes without prior notice.