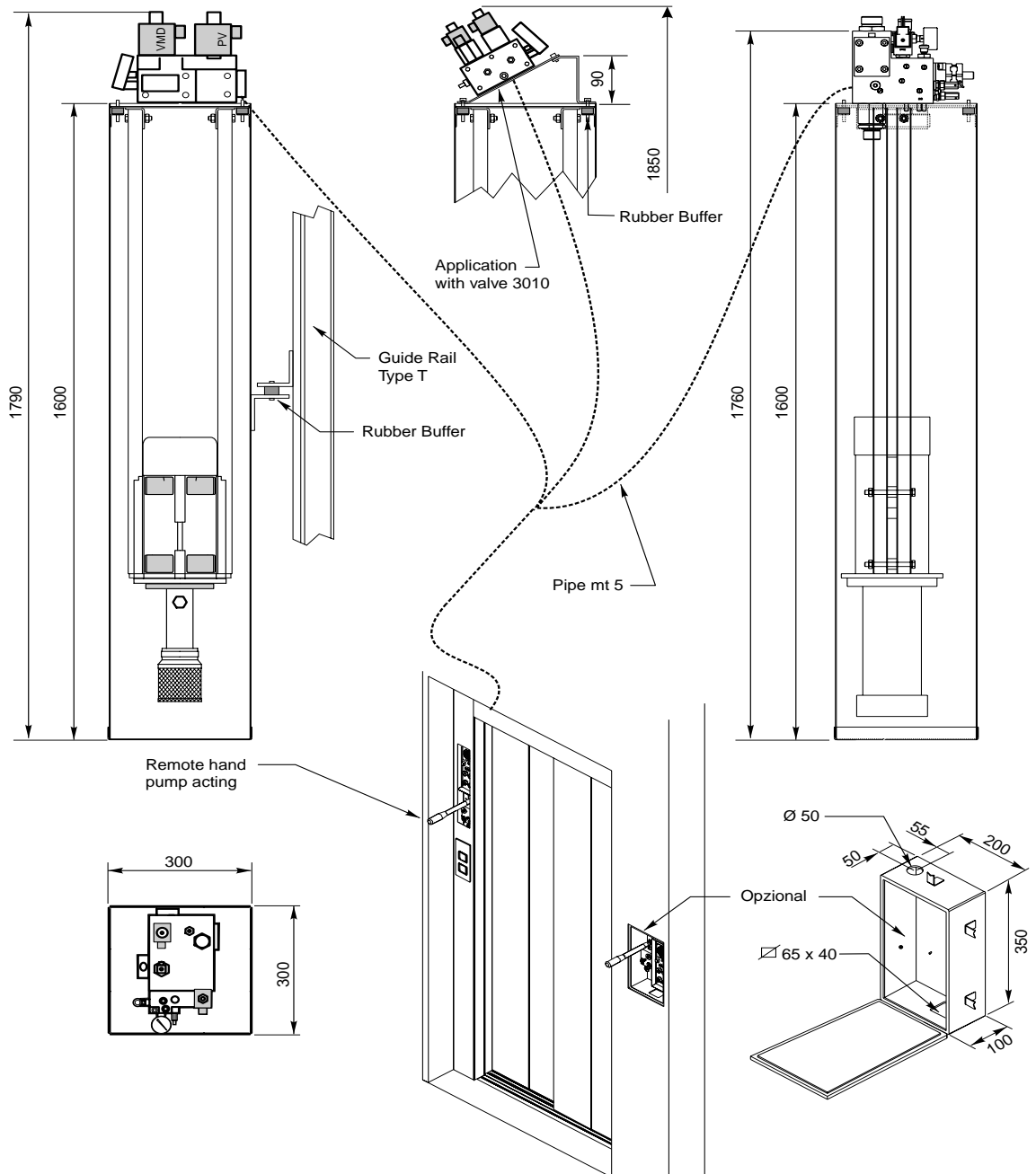


GEV

EN3010

NGV



Technical Specification	50 Hz	60 Hz
	2 poles - 3ph	2 poles - 3ph
motor power [kW]	2,2 ÷ 14,7	2,2 ÷ 14,7
rated pump flow [l/min]	25 ÷ 210	30 ÷ 216
dry weight [kg]	max 100	
circulating oil (utile) [l]	max 72	
minimum oil volume (motor-pump covering) [l]	60	
available with valves 3010, GEV, NGV		

For information not includede in this data sheet please consult GMV

Power Unit Type " MRL - T "

table :	04.042
date :	30/03/2005
revision :	
page :	1/1

GMV