

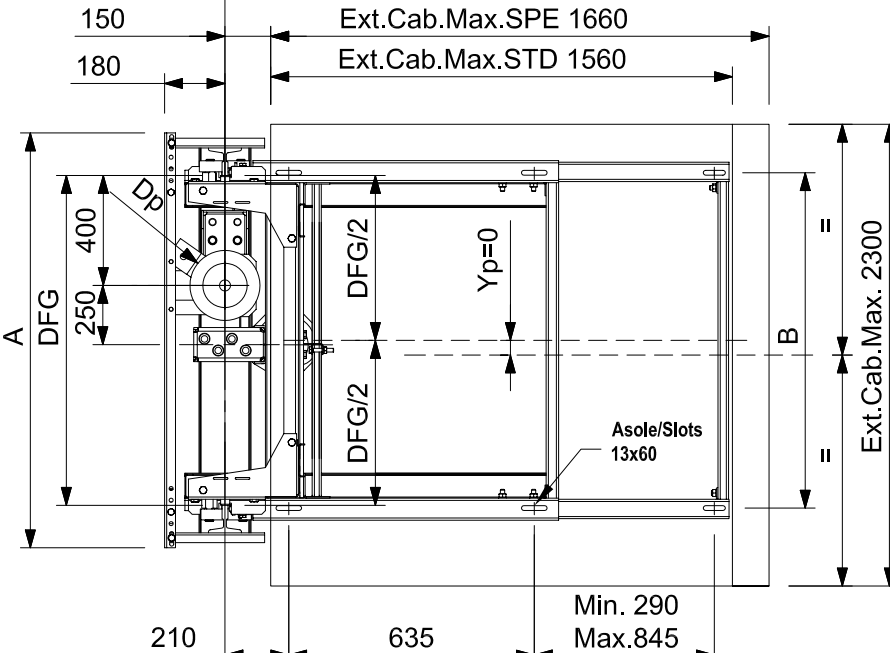
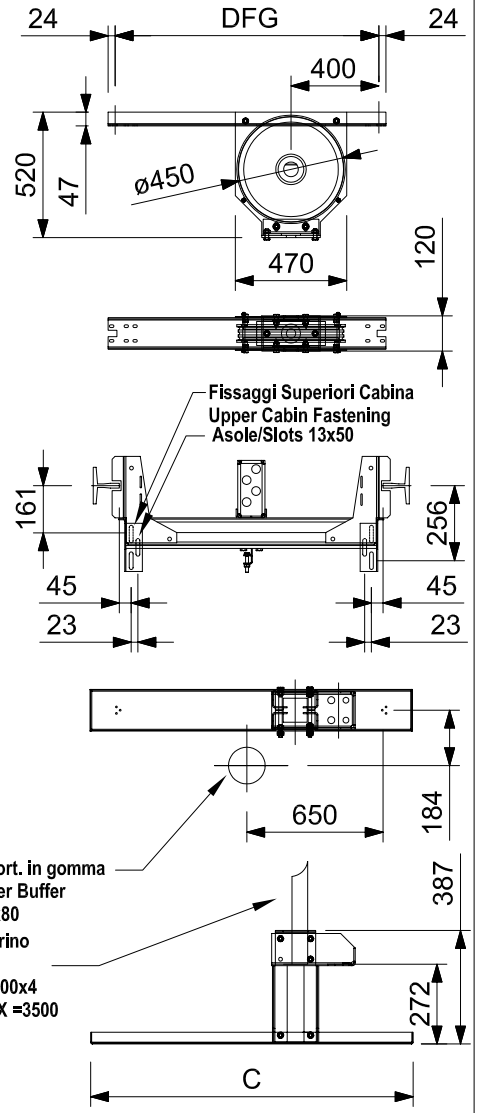
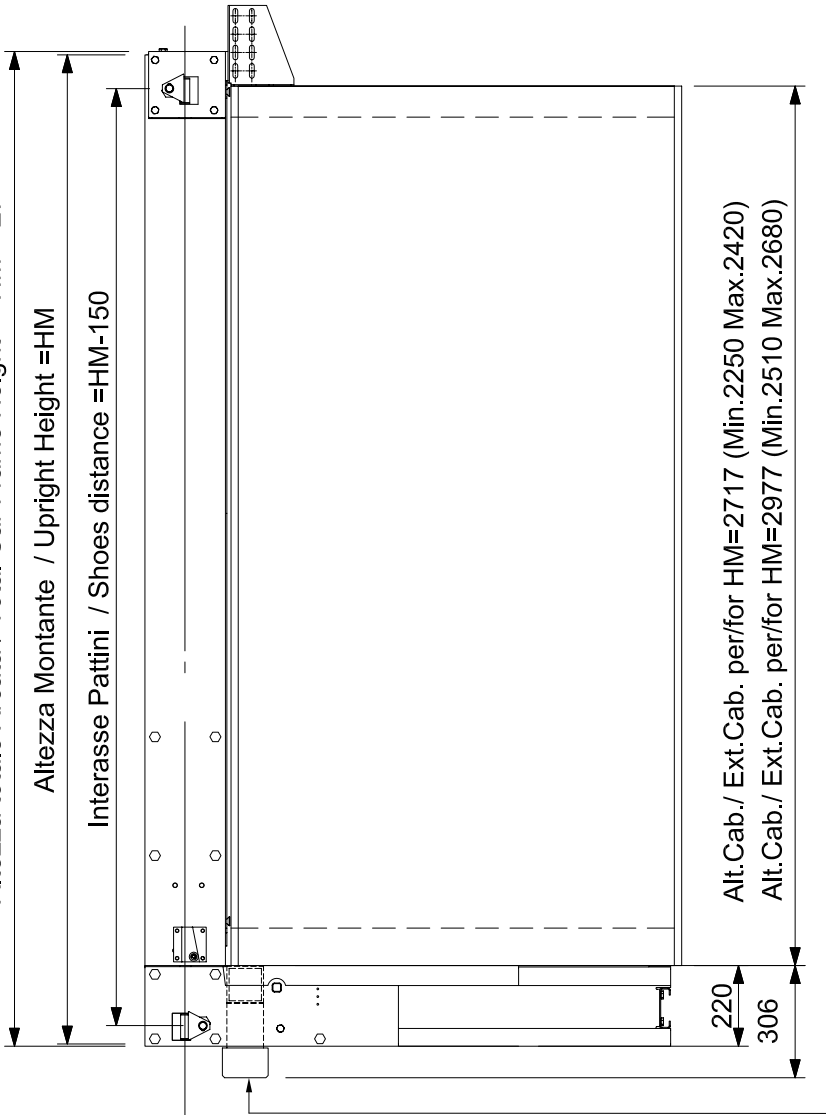
Altezza totale Arcata / Total Car Frame Height = HM + 27

Altezza Montante / Upright Height = HM

Interasse Pattini / Shoes distance = HM-150

Alt. Cab. / Ext. Cab. per/for HM=2717 (Min.2250 Max.2420)

Alt. Cab. / Ext. Cab. per/for HM=2977 (Min.2510 Max.2680)



HM	DFG	A	B	C
2717	900	1132	924	1100
2977	1100	1332	1124	1300
	1300	1532	1324	1500

(\*) Con blocchi Presa progressiva utilizzare solo guide trafilate oliate e lavorate oliate  
Use only cold-drawn oiled and machined oiled Guide Rails in case of Progressive safety gear

CARATTERISTICHE TECNICHE TECHNICAL DATA			
CARICHI LOADS	Peso Cabina Max. / Car Weight (Pc)	695 Kg	
	Massa Arcata / Car Frame Weight (Pa)	260 Kg	
	Portata Nominale / Useful load (Q)	1000 Kg	
	Tiro Funi Max./Max Draught Ropes (Pa+Pc+Q)	1955 Kg	
	Pc + Q Max	1695 Kg	
	Massa Arcatina / Pulley Assembly Weight	65 Kg	
Velocità Max. (con Blocchi a presa Istantanea) / Max Speed (with instantaneous Safety Gear)	0,63 m/s		
Velocità Max. (con Blocchi a presa Progressiva) / Max Speed (with progressive Safety Gear)	(*) 1 m/s		
Tipo Guide STD / Guide Type STD	T127/89/16 - T125/82/16		
ALTRI TIPI A RICHIESTA / OTHER TYPES ON REQUEST	T90/75/16 - T89/62/16		
Numero funi e diametro / Number of Ropes and diameter	N°4 - ø11		
Diametro Puleggia / Pulley Diameter	ø 450		
Pattino tipo / Guide shoe type	a striscio		
Ruote a richiesta / Bearings Rollers optional	ø 125		
Diametro Max. Pistone "Dp" / Max Ram Diameter "Dp"	ø 217		
Fossa Tecnica Min (fondo sp.80mm) / Min Technical Pit (car floor th. 80mm)	500 mm		
Fossa a normativa a EN 81.2 (fondo sp.80mm) / Pit EN 81.2 (car floor th.80mm)	1100 mm		

ARCATA TIPO - CAR FRAME TYPE  
ARCATA 1006 2:1  
CARFRAME 1006 2:1

PAGINA	PAGE	1
DATA	DATE	26/08/08
Nr. DOC.	DOC. Nr.	T6AGS001
EDIZIONE	EDITION	2.0

La TECHNO LIFT si riserva di apportare senza preavviso qualsiasi tipo di modifica. TechnoLift reserves the right to introduce any kind of changes without prior notice.