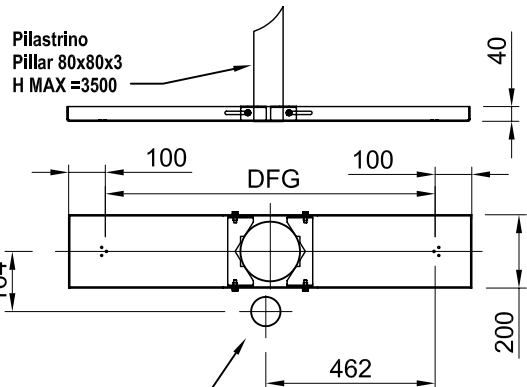
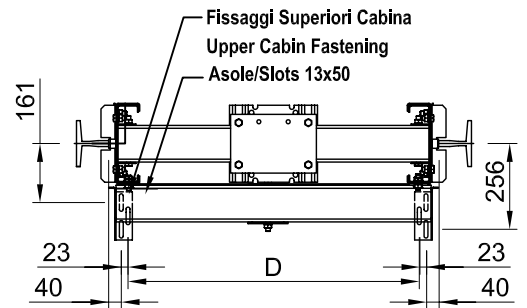


DFG	A	B	C	D	E
800	1032	815	1000	674	624
900	1132	915	1100	774	724



Ammort. in gomma
Rubber Buffer
ø125x80

CARATTERISTICHE TECNICHE TECHNICAL DATA

CARICHI LOADS	Peso Cabina Max. / Car Weight (Pc)	710 Kg
	Massa Arcata / Car Frame Weight (Pa)	155 Kg
	Portata Nominale / Useful load (Q)	630 Kg
	Pc + Pa + Q Max	1500 Kg
Tipo Guide STD T125/82/16 - T125/68/9 - T90/75/16		
Guide Type STD T89/62/16 - T82/68/9		
ALTRI TIPI A RICHIESTA / OTHER TYPES ON REQUEST		
Pattino tipo / Guide shoe type		a striscio
Ruote a richiesta / Bearings Rollers optional		ø 80
Diametro Max. Pistone "Dp" / Max Ram Diameter "Dp"		ø 195
Fossa Tecnica Min (fondo sp.80mm)		462 mm
Min Technical Pit (car floor th. 80mm)		1100 mm
Fossa a normativa a EN 81.2 (fondo sp.80mm)		1100 mm
Pit EN 81.2 (car floor th.80mm)		

ARCATA TIPO - CAR FRAME TYPE

6305 1:1

PAGINA	PAGE	1
DATA	DATE	16/06/08
Nr. DOC.	DOC. Nr.	T6AOL002
EDIZIONE	EDITION	3.0

TECHNO LIFT s.r.l.

LAVIS - TRENTO